



The purpose of the **PETKUS A-cleaner** is the high-quality cleaning of grain, pulses, oilseeds and other free flowing products. The cleaner can be used for pre-, intensive and seed cleaning. The high standard of cleaning is achieved by a combination of the screening process and the air aspiration system.

#### Advantages:

- Suitable for various cleaning processes due to extensive setting options.
- High standard of cleaning and quality
- Simple and quick changing of screens due to the modular design
- Highly effective cleaning of the screen surface by means of a ball cleaning system and a scraper chain, thus achieving a reduction of the overall machine length
- Also suitable for not free flowing products and sections with high debris

#### Description:

The product to be cleaned is evenly distributed and fed into the cleaner by an inlet hopper. The product is moved from the inlet hopper into the pre-aspiration duct. Light rejects, husk and dust are separated here. Afterwards, the product is transported into the screen compartment with the three screen layers. Coarse (top screen) and light rejects (bottom screen) are separated here. The intermediate screen layer can either be used as a top screen or a bottom screen depending on the mode of cleaning desired. The intermediate screen layer can also be used as an intermediate screen for specific tasks in order to achieve better cleaning results due to the different screen perforations. The screened product is moved into the final aspiration chamber. The product is sorted by its bulk density and light rejects such as hollow grains, foreign particles and dust are separated here. All screens are cleaned with balls which are placed under the screens. The top screen layer is also additionally equipped with a scraper chain.

#### Construction:

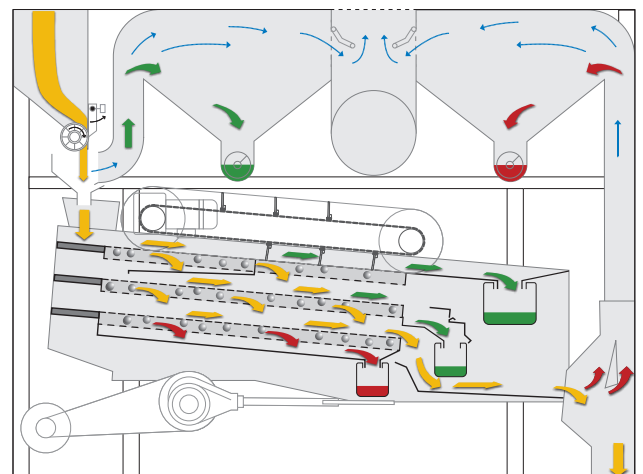
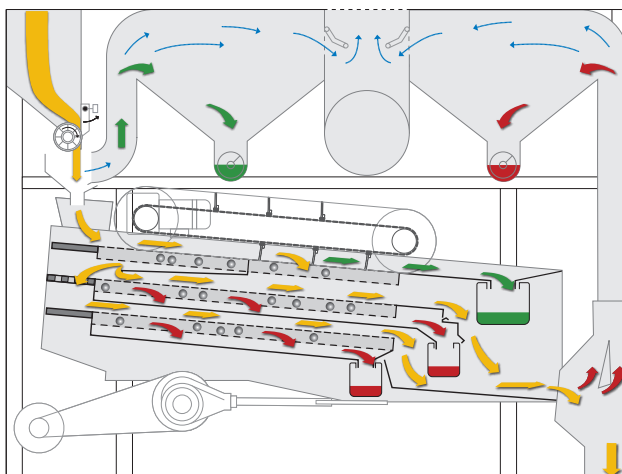
The A-Cleaner is equipped with an inlet hopper, one pre- and one final aspiration with a depositing chamber as well as one screen compartment with three screen layers. The various components of the machine (inlet hopper, screen compartments, fan etc.) are operated by drive motors.

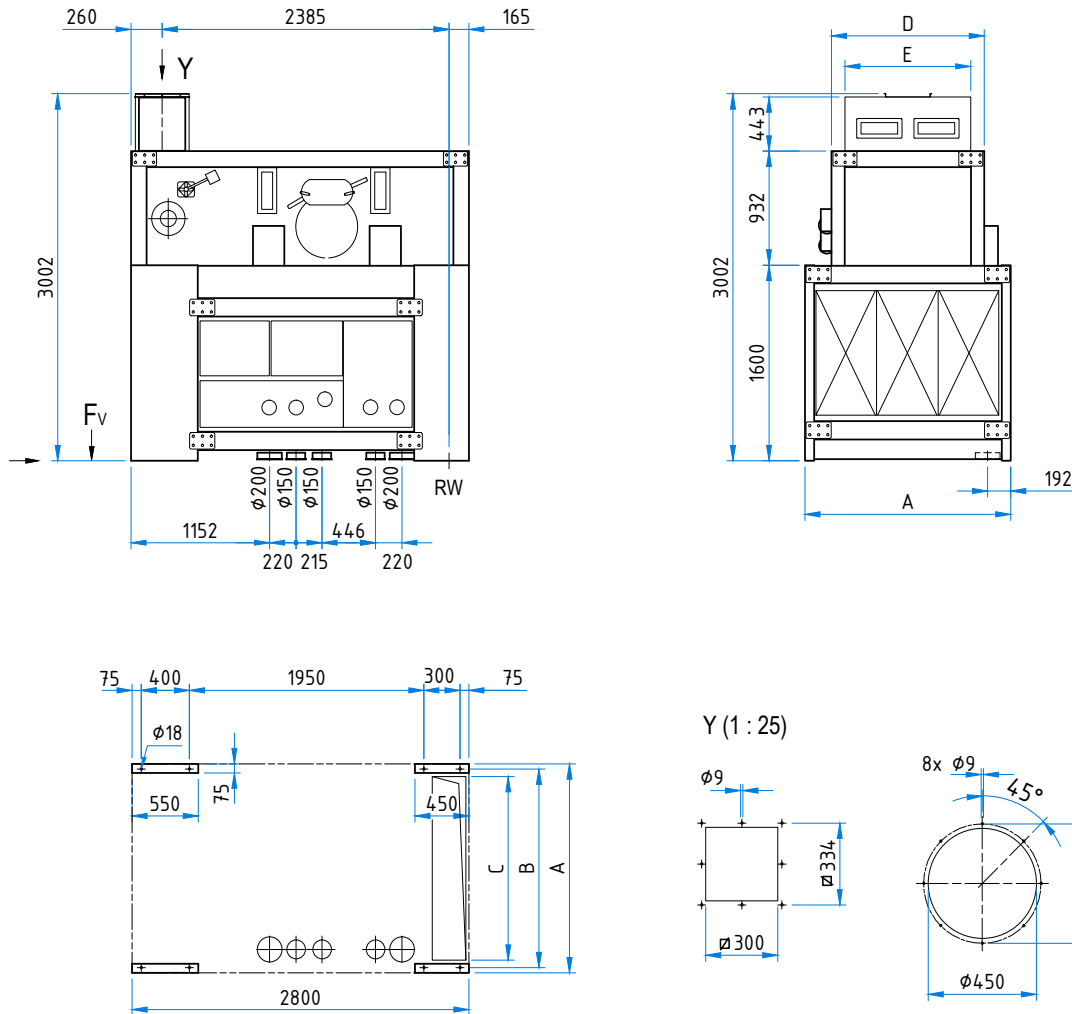
#### Standard Equipment:

- Bolted housing made of painted sheet steel
- Screen compartment, pre- and final aspiration made of galvanized sheet steel
- One set of screens for one screening diagram
- Equipment with a scraper chain
- Drive units with gear motors

#### Options:

- Conversion kits (screens and accessories) for various screening diagrams
- Adaptation to specific customer requirements possible any time





Anschlussmöglichkeiten für Aspiration

Technical Data		A 09	A 12	Technical Data		A 09	A 12
Capacity (Basis: Wheat)				No. of screen segments			
Pre-cleaning	t/h	40	50	Upper screen	pcs.	2 x 3	2 x 4
Industrial cleaning	t/h	20	25	Middle screen	pcs.	2 x 3	2 x 4
Seed cleaning	t/h	4	5	Lower screen	pcs.	2 x 3	2 x 4
Drives				Total No.	pcs.	18	24
Ventilatoren	kW	7,5-11,0	11,0-15,0	Dimension:			
Screen shoe	kW	2,2	2,2	A	mm	1400	1700
Machine inlet drum	kW	0,37	0,37	B	mm	1325	1625
Discharge screws	kW	2 x 0,37	2 x 0,37	C	mm	1200	1500
Screen cleaning, Option	kW	0,37	0,37	D	mm	960	1270
Air volume (Wheat), max.	m³/h	7.000	9.000				
				Length:	mm	2.750	2.750
No. of screen layers	pcs.	3	3	Height: Machine only	mm	2.532	2.532
No. of upper screen frames	pcs.	2	2	with inlet hopper	mm	3.000	3.000
No. of middle screen frames	pcs.	2	2	Weight	kg	1450	1800
No. of lower screen frames	pcs.	2	2	Screen surface	m²	3,78	5,04

Technical alteration reserved.